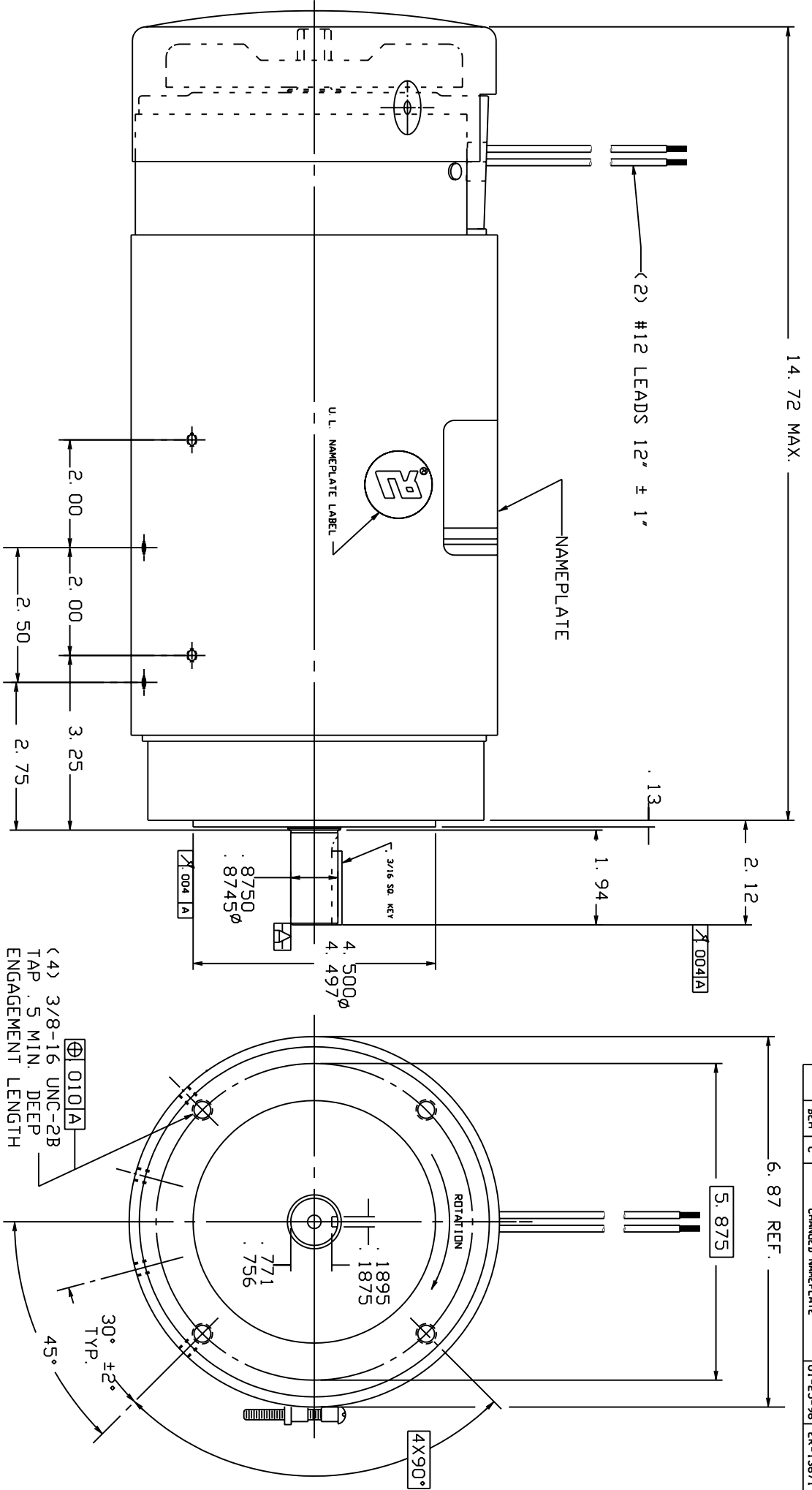


KJC	B	ADDED U. L. LABEL	08/30/93	ER-12166
BEH	C	CHANGED NAMEPLATE	01-25-96	ER-13671



OHIO MOTORS

Model	E-561516X8970A	Pr	11.3
W	2.0	H	
Vol	1750	40°C	
Vol	180	CMT	
Vol	9.5	PM	XXXX
FE	E87757	MS	

TEST DATA (NO LOAD)

VOLTS:	180
AMPS:	0.9
R.P.M.:	1750
ROTATION:	CWDE

- NOTE:**
- 1- SCREW THAT HOLDS BANDS TOGETHER GOES ON RIGHT SIDE, VIEWING FROM PULLEY END.
 - 2- (8) BASE HOLES TO BE TAPPED 1/4-20.
 - 3- FOR MODEL NO. # E-561516X8970

NAMEPLATE INFO.

XX	12	PL	DEC	± .030
XX	13	PL	DEC	± .030

XX 12 PL DEC ± .030	XX 13 PL DEC ± .030	FRACTIONS ± .030	ANGLES ± 1°
94/12/90	56 FRAME MOTOR	8896	
OUTLINE			E-561516X8970-1 C
SHEET 1 OF 1			XXX LBS